

QUARRY SAFETY WEEK

13-17 November

2017

Quarry Safety Week

13th – 17th November 2017

1

CONVEYOR GUARDING

Lack of Guarding can kill or seriously injure!

- Conveyor guarding must physically prevent access to nip points, not impede the operation of the plant and where possible allow routine adjustment and maintenance of the guarded machinery without the need to remove the guard.
- Conveyor guards must be secured in place such that they require a tool or a padlock key for removal.
- All conveyors should be fitted with emergency stop controls (e.g. pull cords and / or emergency stop buttons).
- The power source should be isolated and locked off before the removal of guards for machinery maintenance.



ISOLATION AND LOCK OUT

Lack of Isolation continues to kill and seriously injure people in our industry!

- Remember – the belt moves faster than you brain can react!
- Prior to commencing work on equipment, always ensure it is isolated. Never take a chance.
- Ensure you are familiar with the isolation / maintenance procedures and any relevant risk assessments before starting work on equipment.
- Remember to verify that the system has reduced to zero energy before starting work on the equipment.
- Never remove locks that have been put in place by someone else.



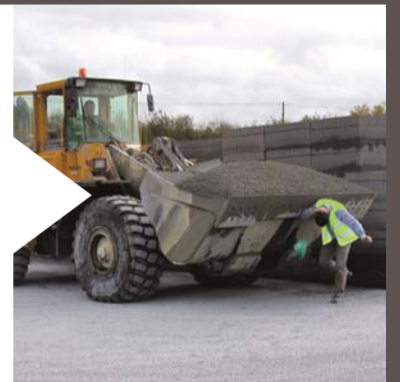
2

3

MOBILE PLANT

To date in 2017, 7 people were killed at work in Ireland in accidents involving mobile plant!

- The majority of accidents involving mobile plant arise from routine maintenance and operation.
- Pedestrians should always be physically segregated from traffic routes where possible. All pedestrians should wear high visibility clothing and make eye contact with the machine operator before approaching the machine.
- Vehicle operators should carry out and record daily pre-start checks on vehicles.
- When entering or dismounting from mobile plant, always use three points of contact.



QUARRY FACES

There have been 2 fatalities in Ireland due to quarry face collapses since 2015!

- Unstable quarry faces, (and stockpiles and lagoons) are a major safety hazard.
- Quarry faces, stockpiles and lagoons must undergo daily inspections and when required, appraisals and/or geotechnical assessments.
- More detailed inspections may be necessary after heavy rain or blasting or following signs of ground movement.
- If an imminent risk is identified, immediate action to safeguard those at risk is required.



4

5

DAILY VEHICLE WALK AROUND CHECK

Every driver should carry out a walk around check before they start their first journey in the vehicle each day.

- All defects identified must be recorded and reported to a suitably qualified person with responsibility for maintenance of vehicles.
- All reported defects must be followed up and appropriate action taken before the vehicle is used on a public road.

