

# Quad Bike Safety Update

June 2018

**Vehicles continue to be the biggest killers on Irish farms. In the past 10 years (2008-2017) there were 12 quad bike fatalities out of a total of 64 farm vehicle fatalities.**

Quad bike fatalities represented 19% of all farm vehicle fatalities during this period. 75% of those that suffered fatal quad bike accidents were aged 60 years or older.

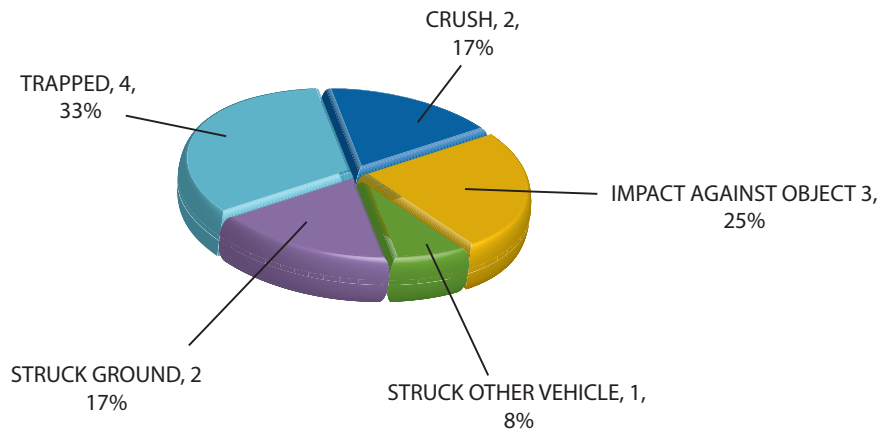
In general, roll-over bars are not provided with quad bikes because traditional roll bar design depends for its effectiveness on the operator wearing a seatbelt. In the absence of a seatbelt, there is a risk of the thrown operator being struck by the bars in the event of a roll-over.

More recently, roll-over protection devices have appeared on the market designed for use with quad bikes. At least one of these has been certified in accordance with the requirements of the European Communities Machinery Directive and the Authority has been asked for its view on these devices.

Fitting of CE Marked Roll-Over Protection Devices (i.e. ROPs), now available on the market for all-terrain vehicles (ATVs) or quad bikes, is at the discretion of the owner/operator. The Health and Safety Authority does not have sufficient information at this time to form a view on the effectiveness of these novel designs and thus is not issuing an instruction or recommendation in respect of such devices.



## Main mode of quad bike deaths in agriculture over the last 10 years 2008-2017:



**TOTAL: 12**



Priority must always be given to:

- **operator training,**
- **wearing of safety gear such as gloves, safety footwear and head protection,**
- **control of speed, and**
- **planning and checking of route.**

The Authority is interested to learn of any user experience with these latest ROPs designs. If you have any feedback please contact Martina Gormley on (01) 6147102 or email [martina\\_gormley@hsa.ie](mailto:martina_gormley@hsa.ie)

### Further Information and Guidance:

Visit our website at [www.hsa.ie](http://www.hsa.ie), telephone our contact centre on **1890 289 389** or email [wcu@hsa.ie](mailto:wcu@hsa.ie)

Use BeSMART, our free online risk assessment tool at [www.besmart.ie](http://www.besmart.ie)

Check out our range of free online courses at [www.hsalearning.ie](http://www.hsalearning.ie)

