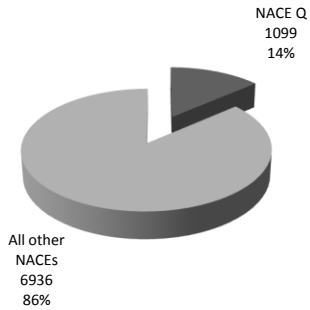
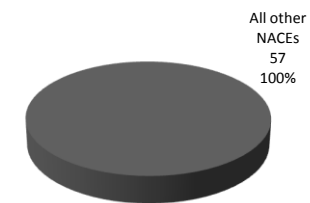


NACE Q - Human health and social work activities 2008

Non-fatal injury



Fatal injury



Non-fatal by item assoc.

Humans	297, 27%
Surfaces at ground level - ground and floors	82, 7.5%
Loads - handled by hand	51, 4.6%
Other portable or mobile machines and equipment	35, 3.2%
All other	634, 57.7%

Non-fatal by work env.

Hospital	611, 55.6%
Teaching establishment, school, college, creche	51, 4.6%
Private home or garden	34, 3.1%
Public thoroughfare (e.g. roads, parking areas)	29, 2.6%
All other	374, 34%

Non-fatal injury mode

Physical strain - on musculoskeletal system	348, 31.7%
Bite, kick (animal or human)	234, 21.3%
Horizontal motion, crash on or against	208, 18.9%
Collision with object (including vehicles) - injured person was moving	59, 5.4%
All other	250, 22.7%

Non-fatal trigger

Fall on same level (slip, stumble etc)	212, 19.3%
Lifting, carrying	155, 14.1%
Shock, fright	137, 12.5%
Pushing, pulling	132, 12%
All other	463, 42.1%

Non-fatal by occupation

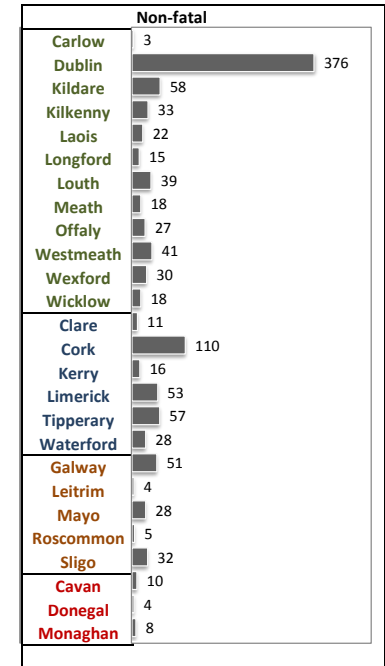
Life science and health professionals	684, 62.2%
Personal and protective services workers	185, 16.8%
Other associate professionals	27, 2.5%
Labourers	25, 2.3%
All other	178, 16.2%

Non-fatal injury type

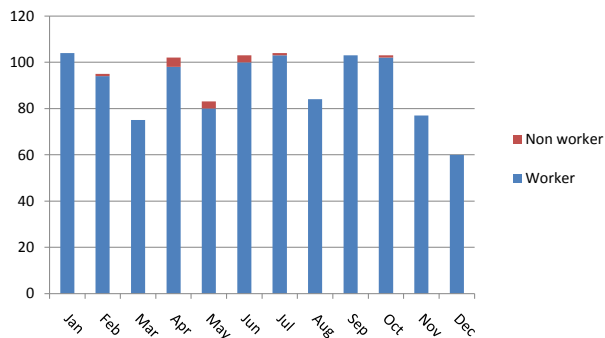
Sprains and strains	589, 53.6%
Superficial injuries	170, 15.5%
Closed fractures	110, 10%
Open wounds	68, 6.2%
All other	162, 14.7%

Non-fatal body part

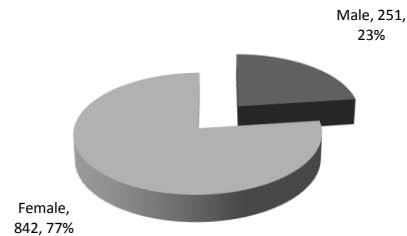
Back, including spine and vertebra in the back	222, 20.2%
Leg, including knee	57, 5.2%
Finger(s)	49, 4.5%
Arm, including elbow	48, 4.4%
All other	723, 65.8%



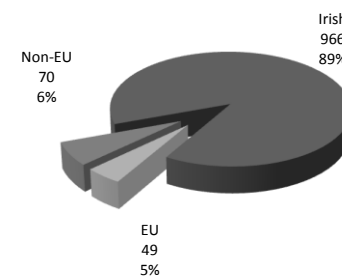
Non-fatal injury



Non-fatal injury by gender



Non-fatal injury by nationality



Non-fatal injury by age bracket

