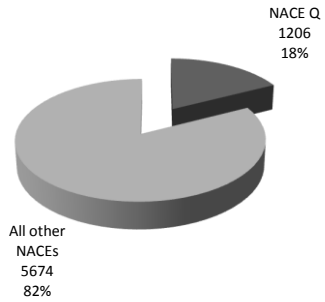
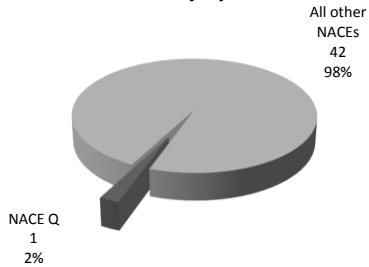


NACE Q - Human health and social work activities 2009

Non-fatal injury



Fatal injury



Non-fatal by item assoc.

Humans	403, 33.3%
Loads - handled by hand	199, 16.5%
Surfaces at ground level - ground and floors	178, 14.7%
Other materials, objects, products, components	61, 5.0%
All Other	368, 30.4%

Non-fatal by work env.

Hospital	659, 54.5%
Other healthcare environment	282, 23.3%
Teaching establishment, school, college, creche	58, 4.8%
Private home or garden	51, 4.2%
All Other	159, 13.2%

Non-fatal injury mode

Physical strain - on musculoskeletal system	373, 30.9%
Horizontal motion, crash on or against	199, 16.5%
Bite, kick (animal or human)	105, 8.7%
Vertical impact (resulting from fall)	78, 6.5%
All other	454, 37.6%

Non-fatal trigger

Fall on same level (slip, stumble etc)	247, 20.4%
Lifting, carrying	187, 15.5%
Pushing, pulling	120, 9.9%
Twisting, turning	102, 8.4%
All Other	553, 45.7%

Non-fatal by occupation

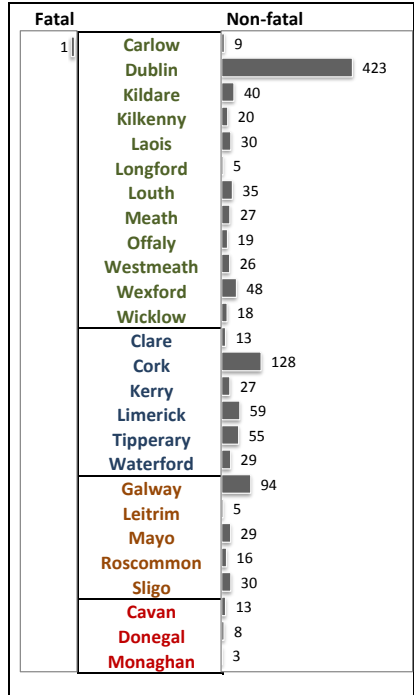
Life science and health associate professionals	477, 39.5%
Personal and protective services workers	251, 20.8%
Other associate professionals	192, 15.9%
Customer service	81, 6.7%
All Other	208, 17.2%

Non-fatal injury type

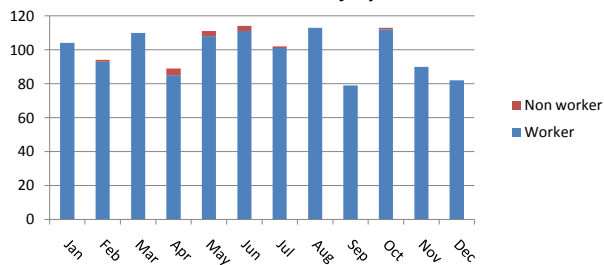
Sprains and strains	633, 52.4%
Superficial injuries	189, 15.6%
Closed fractures	130, 10.8%
Open wounds	57, 4.7%
All other	200, 16.5%

Non-fatal body part

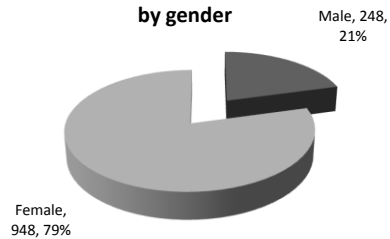
Back, including spine and vertebra in the back	335, 27.7%
Arm, including elbow	85, 7.0%
Finger(s)	85, 7.0%
Shoulder and shoulder joints	79, 6.5%
All other	625, 51.7%



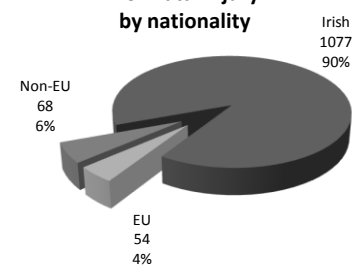
Non-fatal injury



Non-fatal injury by gender



Non-fatal injury by nationality



Non-fatal injury by age bracket

