

Work Related Vehicle Incidents - The Harm Landscape

Michael Brosnan

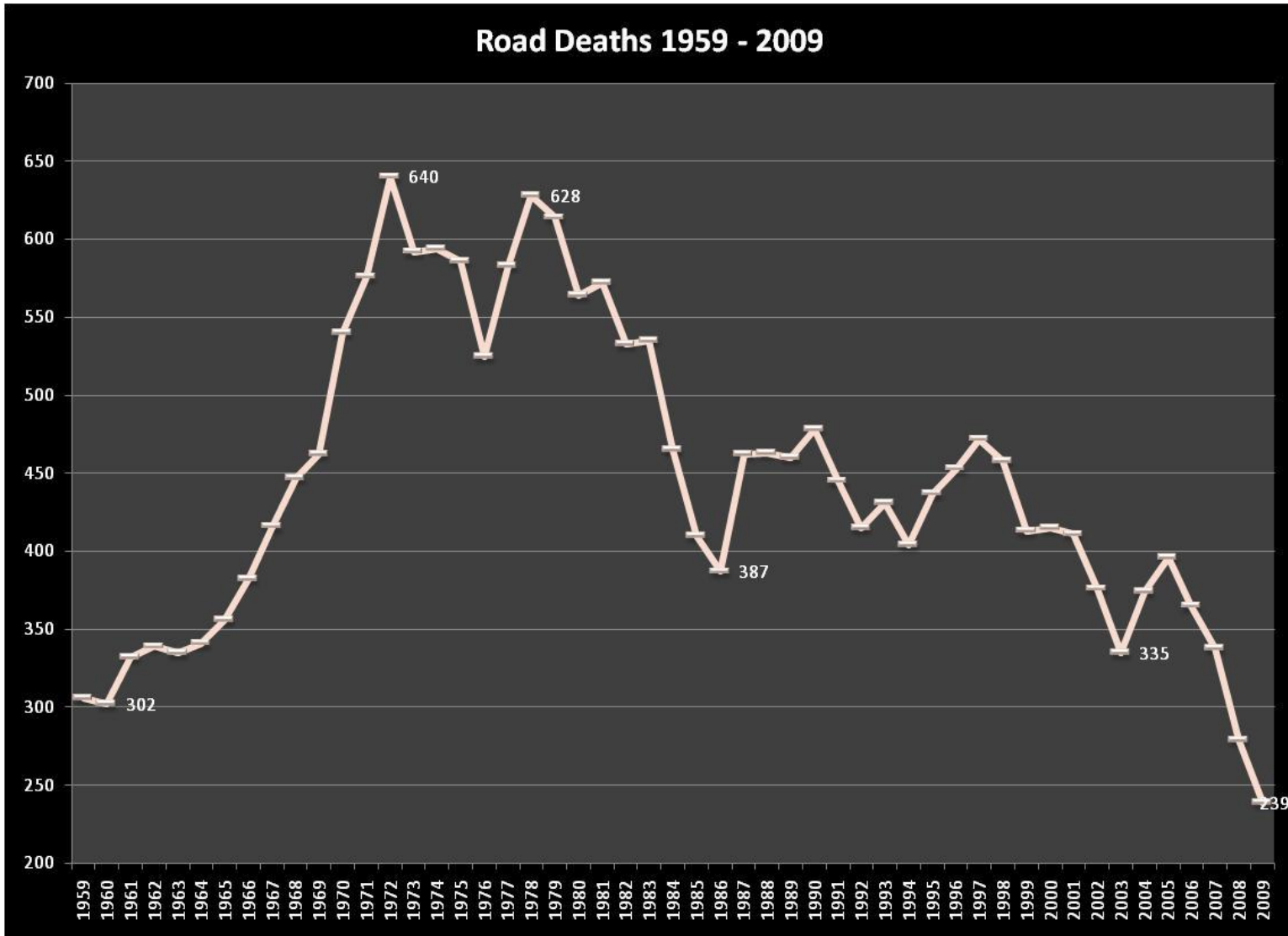
Research Manager

Road Safety Authority

Driving

Probably the most dangerous (and most common) task we complete during our lives

Ireland



Serious Injuries- Ireland

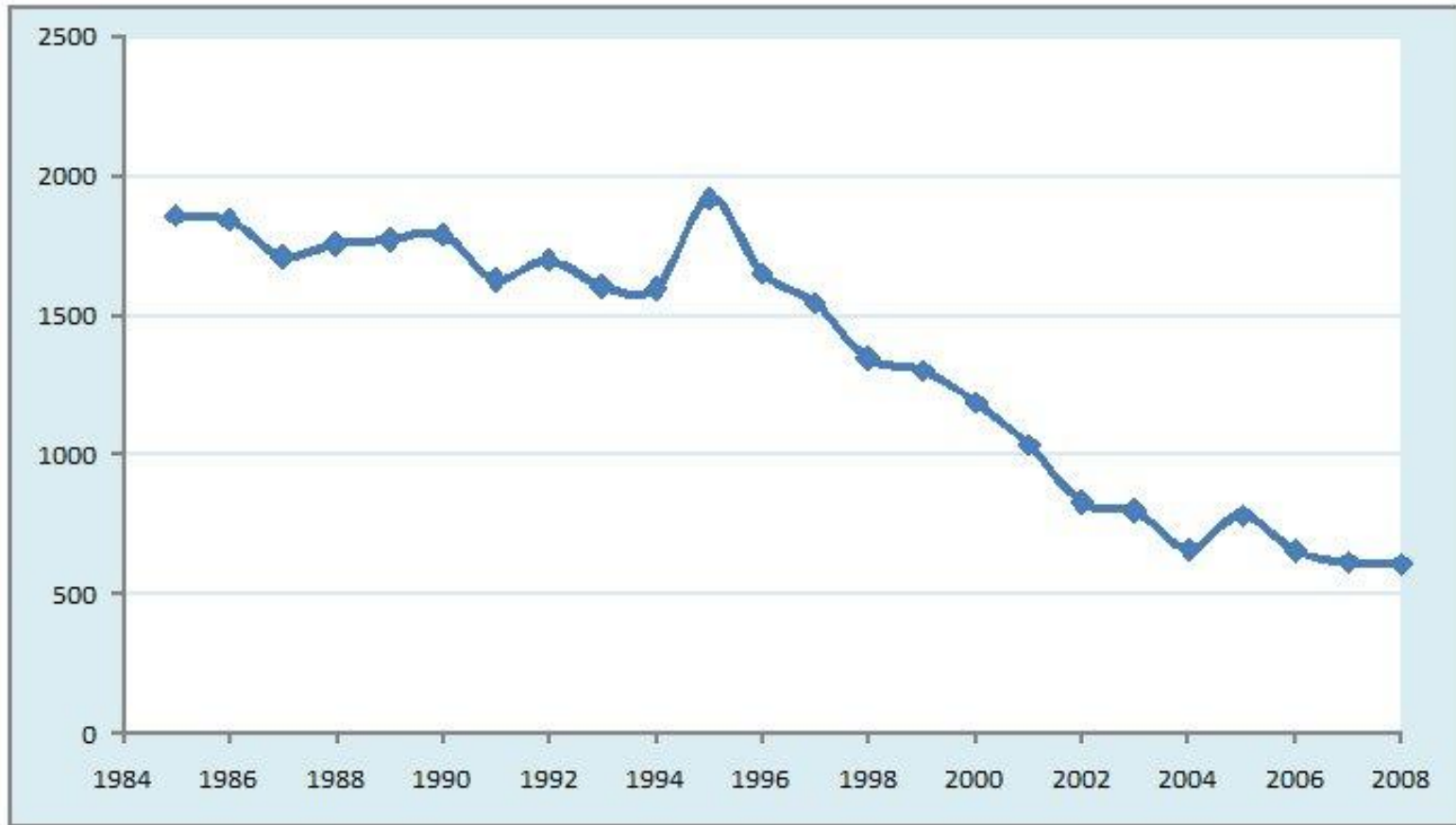


Table A2: Total Cost of Road Collisions in 2008

Type	Number of collisions	Cost per collision	Total cost (€)
Fatal	254	2,758,111	700,560,306
Serious	613	368,474	225,874,569
Minor	5,864	36,291	212,991,527
Material Damage	21,728	2,903	63,082,364
Total	28,464	N/A	1,202,508,765

(Source of GNP per person employed growth rate: CSO)

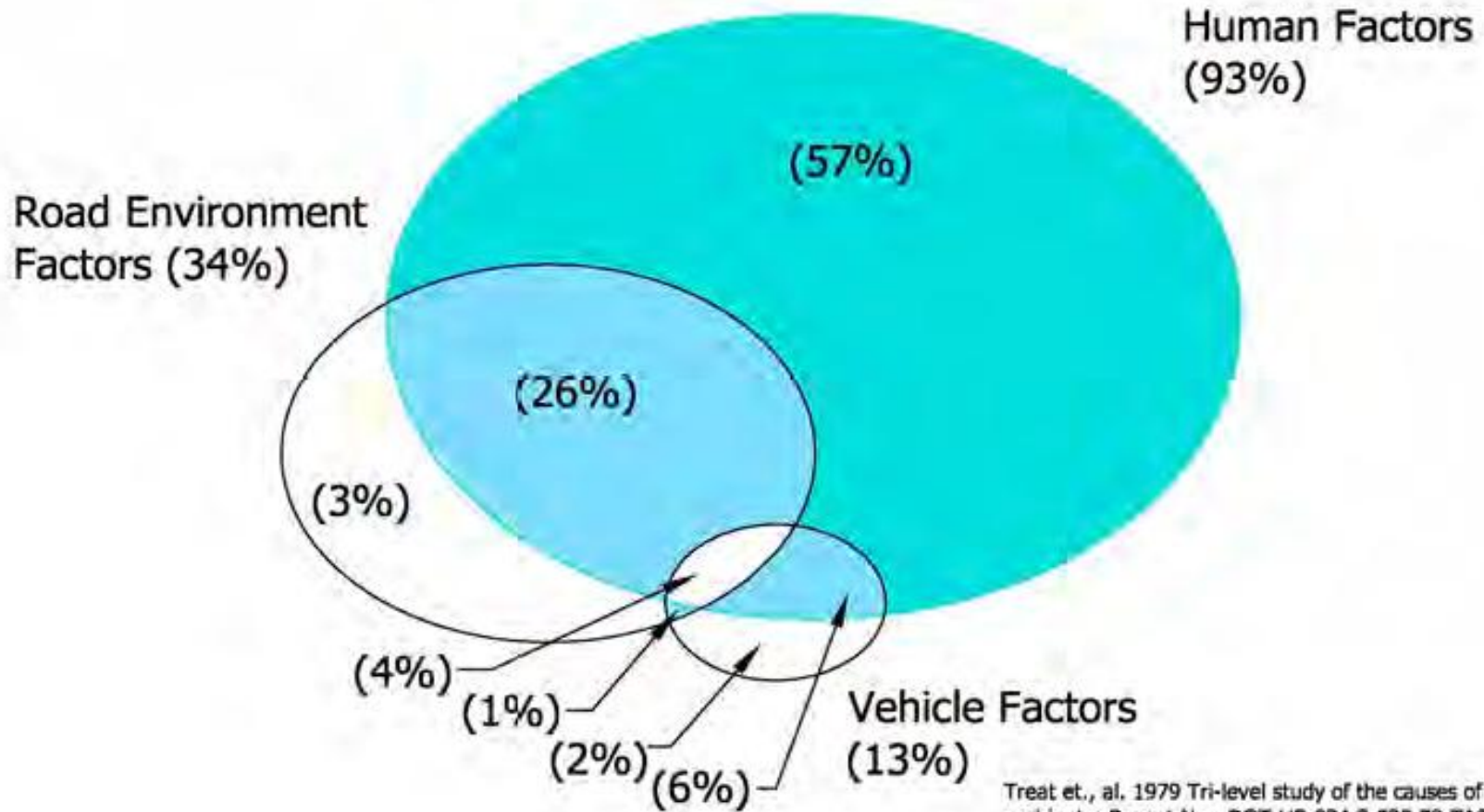
FACTORS

RSA



Wednesday, June 09, 2010

Interaction - Factors



Treat et., al. 1979 Tri-level study of the causes of traffic accidents: Report No. DOT-HS-034-3-535-79-TAC(S)
2003 FIARC Technical Committee on Road Safety

Primary Causation Factors

- Speed
- Impairment
- Distraction
- Personal Protection Equipment (PPE)
- Vehicle conditions **(13%)**
- Environment conditions **(34%)**

Speed

- Severity
- Frequency

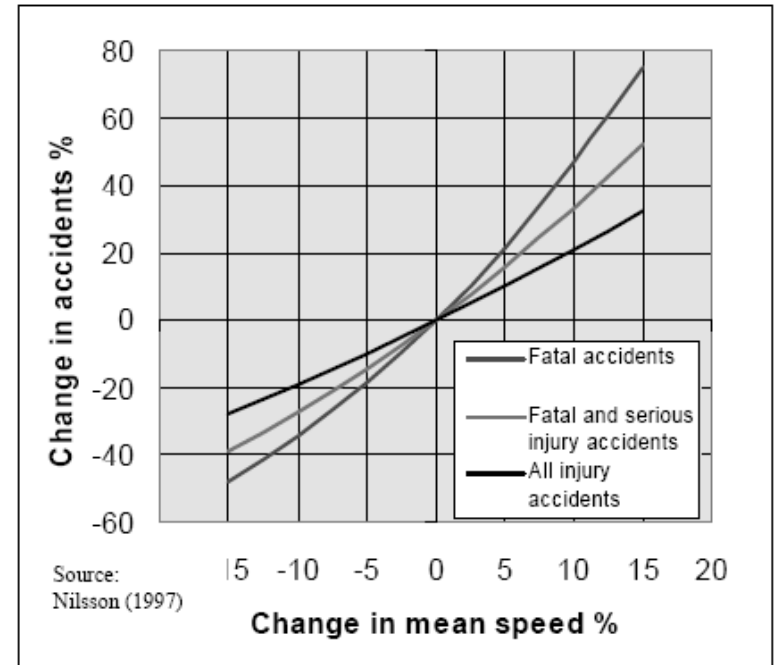
The faster the speed, the bigger the mess

Excessive and inappropriate speed is the number one road safety problem in many countries, often contributing to as much as one third of fatal accidents and an aggravating factor in all collisions ***OCED 2006***

Speed Contd.

The significant adverse road safety impacts of higher vehicle speeds have been confirmed by extensive research. Modelling of the impacts of changes in vehicle speeds has led to the following rule of thumb: a 5 % increase in average speed leads to approximately a 10 % increase in all injury accidents and a 20 % increase in fatal accidents.

The same research indicates the positive impacts of reducing vehicle speeds: a 5 % decrease in average speed leads to approximately a 10 % decrease in injury accidents and a 20 % decrease in fatal accidents. Reducing speed by a few km/h can thus greatly reduce the risks of accidents as well as mitigating the consequences of an accident¹.

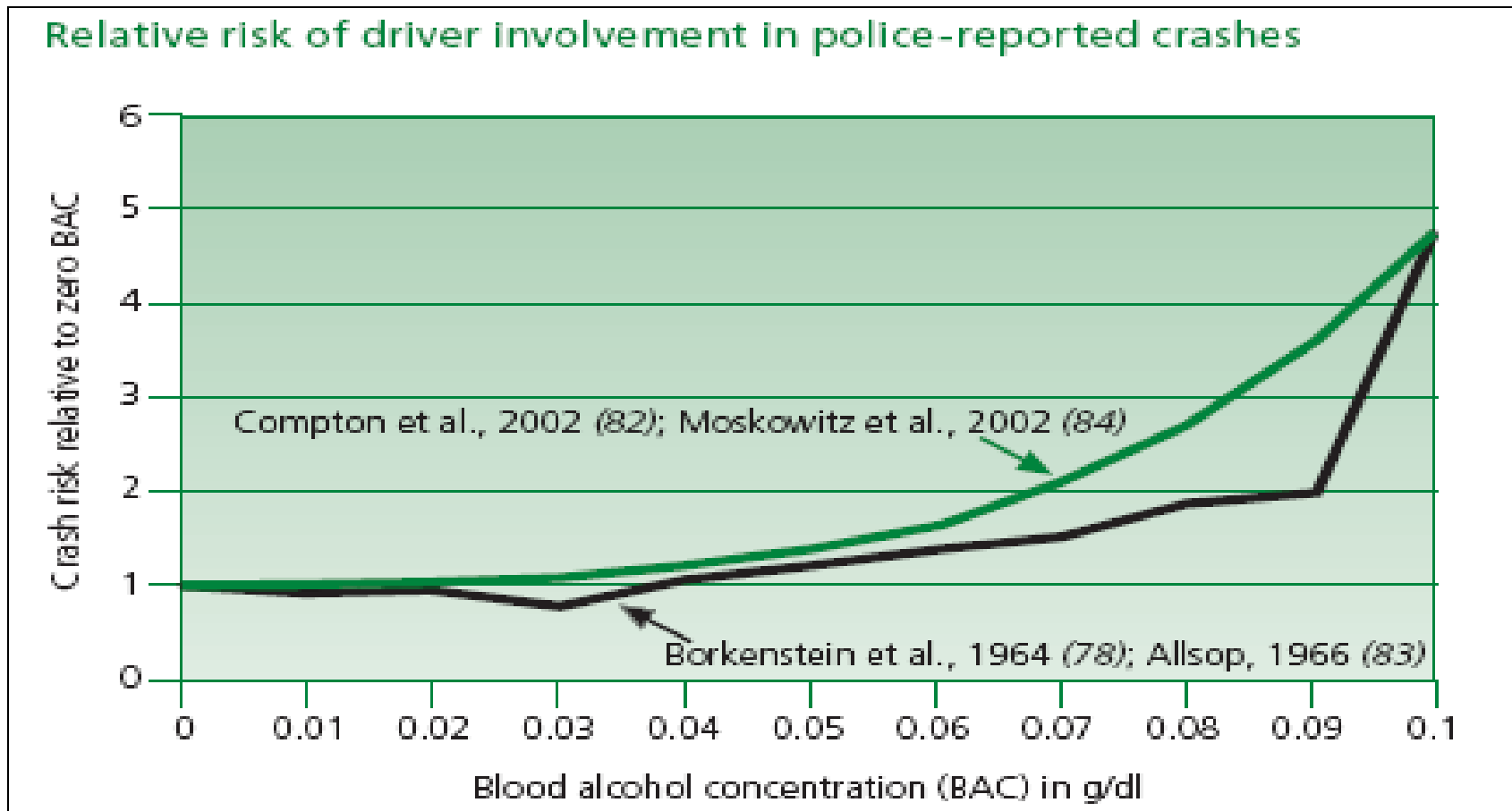


Speed Enforcement

Country	Code	Yearly speed tickets per thousand population		
		2006	2007	2008
The Netherlands	NL	543	595	558
Austria	AT	327	458	456
Switzerland	CH	350	335	n/a
France	FR	114	127	138
Cyprus	CY	87	165	137
Slovenia	SI	n/a	n/a	72
Norway	NO	52	52	51
Romania	RO	n/a	n/a	51
Finland	FI	38	42	50
Latvia	LV	41	45	49
Denmark	DK	47	48	45
Spain	ES	17	27	44
Luxembourg	LU	48	49	42
Ireland	IE	n/a	45	40

Impairment

- Alcohol



Fatal Crashes That Were Alcohol Related

Drink Driving in Ireland

Dr Declan Bedford
13th October 2008
RSA Conference Dublin

	All Crashes	Alcohol crashes	% Alcohol Crashes
2003	301	110	37%
2004	334	95	28%
2005	360	104	29%
2003-5	995	309	31%

*The decrease is not statistically significant

Alcohol Enforcement

Country	Code	2006		2007		2008	
		Roadside police tests per 1000 population	Percentage above legal limit	Roadside police tests per 1000 population	Percentage above legal limit	Roadside police tests per 1000 population	Percentage above legal limit
Finland	FI	n/a	n/a	318	1.6%	385	1.3%
Norway	NO	n/a	n/a	n/a	n/a	338	n/a
Sweden	SE	264	0.9%	292	0.8%	287	0.8%
Slovenia	SI	162	8.0%	191	7.3%	200	5.8%
France	FR	186	3.2%	182	3.3%	190	3.3%
Cyprus	CY	90	6.2%	149	6.8%	182	5.9%
Greece	EL	118	3.4%	143	2.9%	135	3.1%
Hungary	HU	144	2.9%	143	3.2%	130	3.1%
Ireland	IE	n/a	n/a	113	4.1%	128	3.2%

Drugs - What medicines affect driving?

The following medicines have side-effects that may reduce your driving ability.

- Sleeping tablets
- Anti-depressants
- Sedatives, tranquilizers or other medicines for anxiety
- Some pain killers
- Some allergy or hay fever medicines
- Many cough and cold remedies (can cause drowsiness or poor co-ordination)
- Some anti-nausea medicines
- Some medicines for epilepsy
- Some medicines for high blood pressure or heart conditions
- Some medicines for diabetes

Wednesday, June 09, 2010

RSA



MEDICINES
AND DRIVING

Údarás Um Shábháilteacht Ar Bhóithre
Road Safety Authority

15

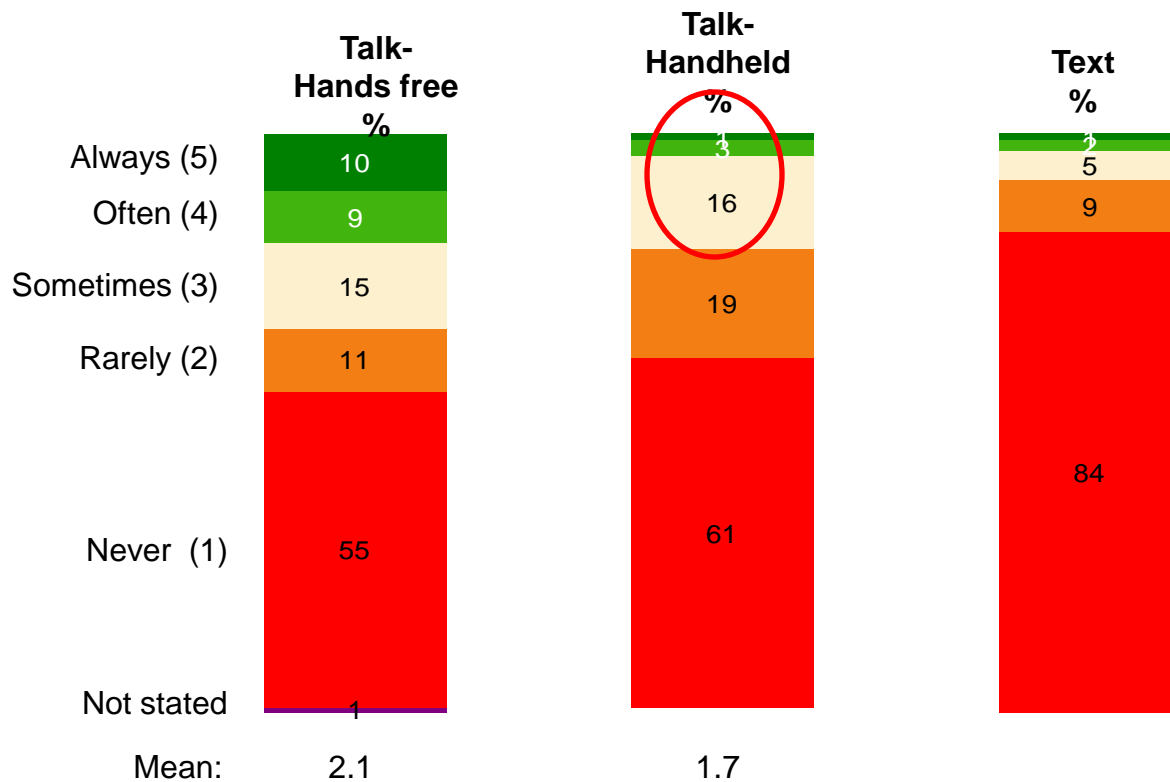
Distraction



Mobile Phone Usage

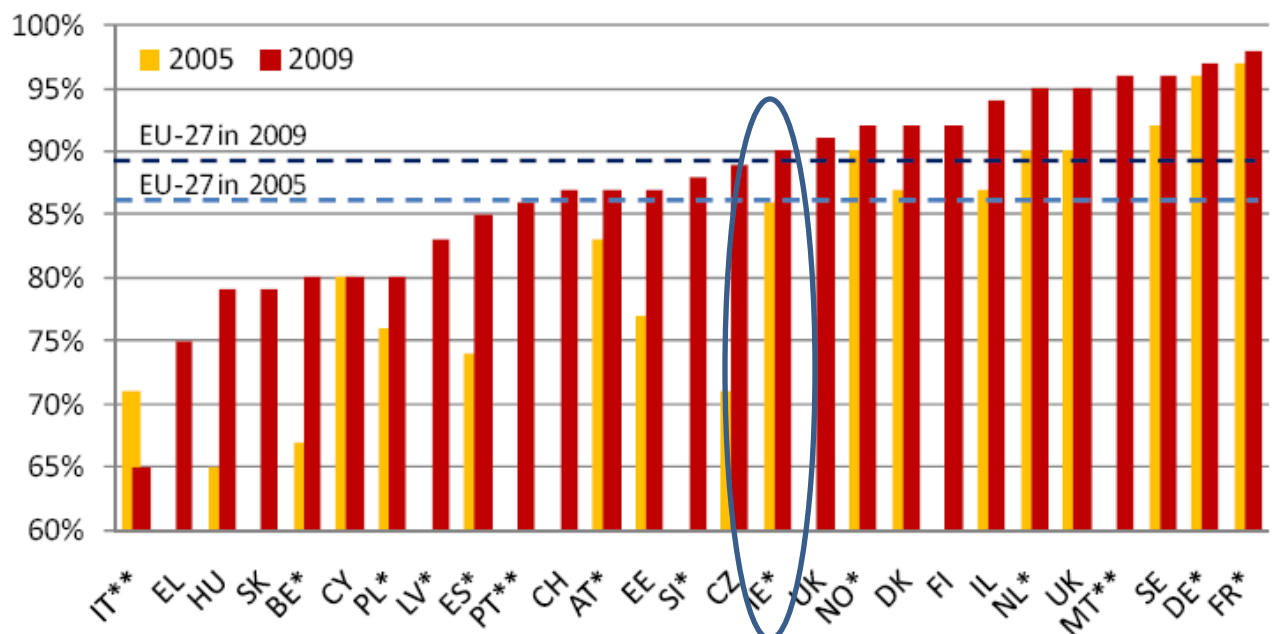
Observational 

	Total Observations	Use of Mobile Phone	% Using Mobile Phone
Athlone & Surrounds	4059	71	2%
Cork	4664	576	12%
Dublin	6817	248	4%
Dundalk / Drogheda	3797	132	3%
Galway	5036	184	4%
Limerick	5038	333	7%
Maynooth & Surrounds	4538	425	9%
Total	33,949	1,969	6%



 Attitudinal

Seat belts



light vehicles (latest available year), with

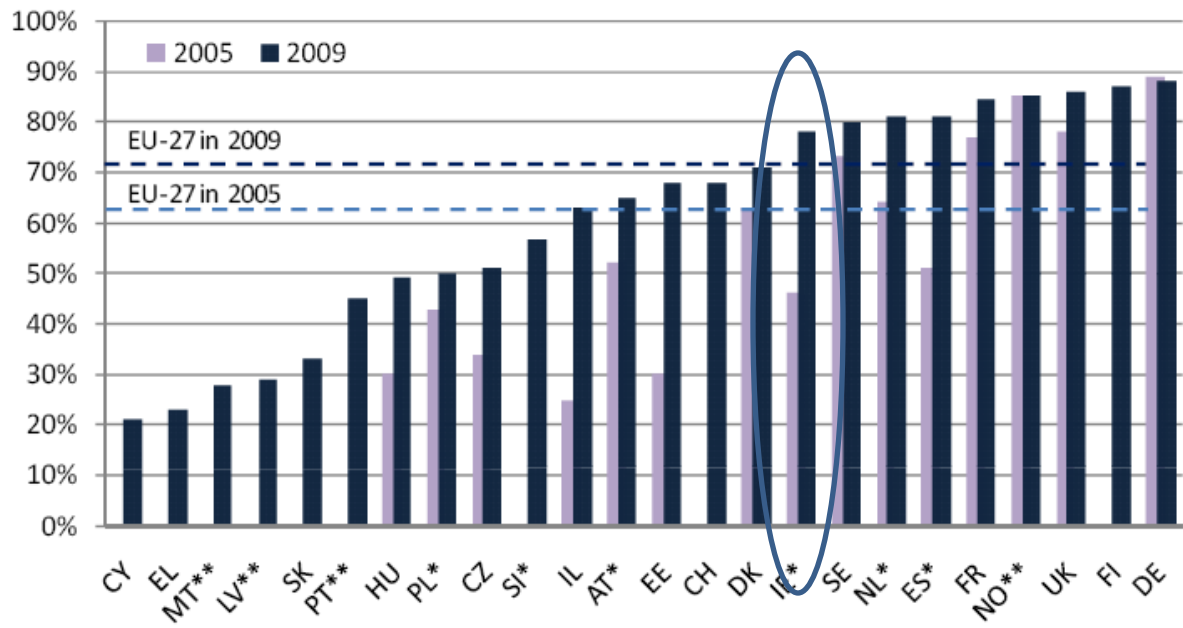


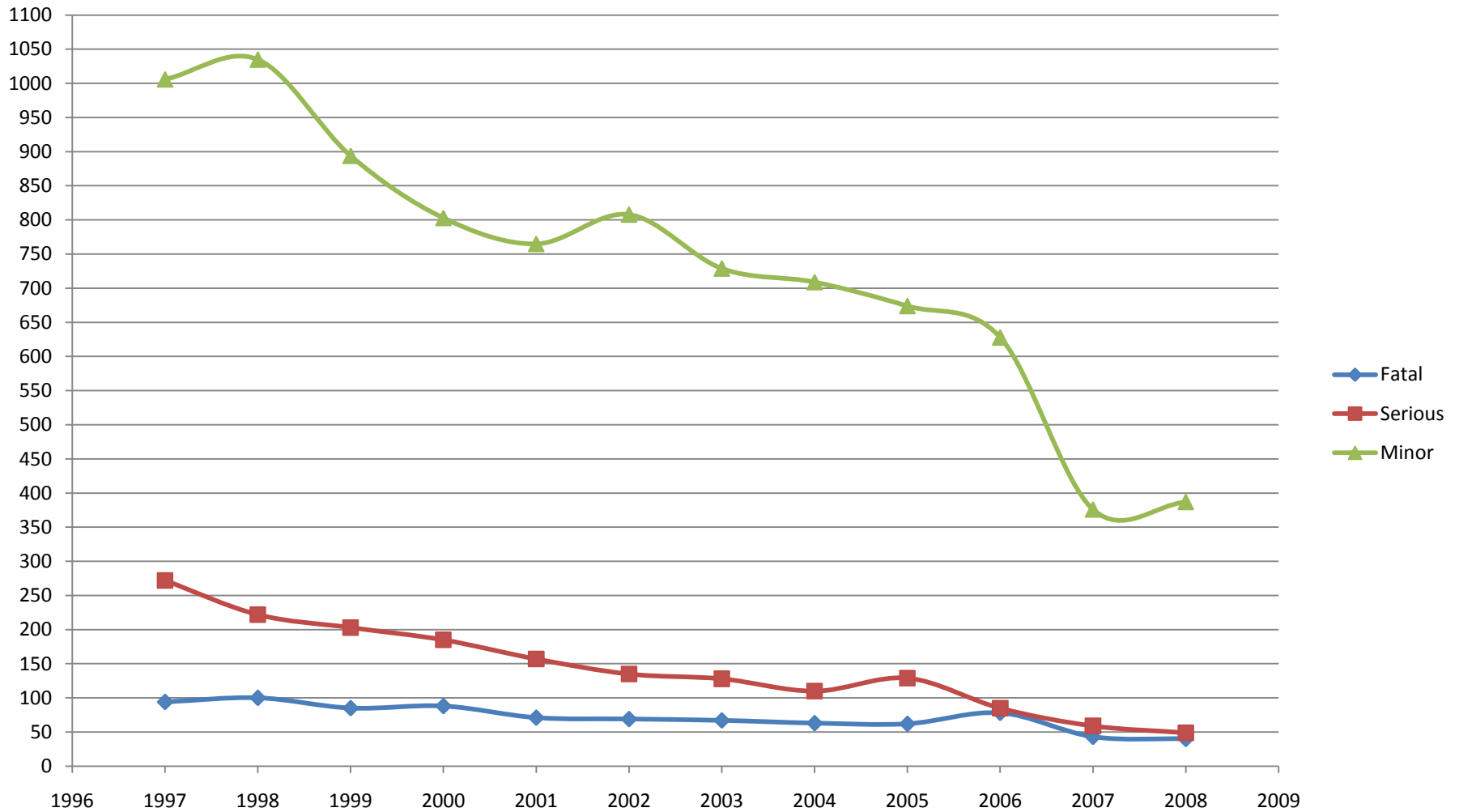
Fig. 10: Seat belt wearing rates in rear seats of light vehicles in 2009, with 2005 for comparison. (* 2008. **SafetyNet)

Work Related Road Safety

Summary (1997-2008)

- Of the 4,153 fatal collisions 860 **(21%)** involved a work related vehicle and was used in connection with travelling to and from work
- Of the 11,370 serious injury collisions 1,734 **(15%)** involved a work related vehicle and was used in connection with travelling to and from work
- Of the 66,830 minor injury collisions 8,814 **(13%)** involved a work related vehicle and was used in connection with travelling to and from work

Trends in Work Related Road Collisions, 1997-2008



Wednesday, June 09, 2010

An investigation into the official data sources and collection methods used to capture selected work-related death statistics in the Republic of Ireland.

A report prepared for the Department of Enterprise, Trade and Employment and the Health and Safety Authority by the School of Public Health and Population Science, Centre for Safety and Health at Work, University College Dublin.

January 2007



“In Ireland, this problem has been shown to exist in the small geographical area of Co. Kildare, where, in a three-year period, the number of work-related road traffic fatalities was more than double that of the work fatalities reported to the HSA under the workplace accident notification scheme”.



Professional Drivers

We'll tell you everything you need to know about the Certificate in Professional Competence (CPC): how to get it, standards and regulations, information about driving safely, driver hours, applying for your tachograph card and more.

Quicklinks

- › Trucks, Buses, Coaches & vans
- › Driver hours
- › Vehicle testing
- › ADI

Driver CPC

- › Getting your CPC
- › Annual training
- › Regulations
- › Find a CPC Trainer

Tachograph cards

- › Driver card
- › Company card
- › [Workshop card](#)
- › **Lost/stolen or faulty cards**

Workshop card

Driving safely

- › Driver hours
- › Managing for safety
- › Complaints procedure

Owners & managers

- › Road haulage enforcement
- › Maintaining your vehicles
- › Key rules for digital drivers
- › **Useful guides**



Drivers Hours

- › Driver hours
- › Managing for safety
- › Complaints procedure



Vehicle testing

- › Testing
- › Regulations

Road Safety Authority - INTERVENTIONS



- **CPC** Certificate of Professional Competency
- **ADI** Approved Drivers Instructions
- **CBT** Compulsory Basic Training (Motorcyclists)
- **GDL** Graduated Driving Licence
- **Consultations** (Fitness to Drive, Motorcycling)
- **Rules of the Road** – Translation
- **Information leaflets**
- **Road Safety for Work Guidelines /CDRom**

Road Safety Authority Publications



Survey of Seat Belt Wearing 2007



THIS IS YOUR BIKE

A safety guide for you and your motorcycle or moped

Údarás Um Shábháilteacht Ar Bhóithre
Road Safety Authority

You're four times
It's hard to
more likely to
concentrate on
have a crash
two things
when you're on
at the same time.
a mobile phone.

Mobile phones and Driving

Údarás Um Shábháilteacht Ar Bhóithre
Road Safety Authority



THE USE OF AGRICULTURAL VEHICLES AND WORKS VEHICLES ON PUBLIC ROADS

Your Perspective; Your Views?
A Consultation Document
July 2008

Údarás Um Shábháilteacht Ar Bhóithre
Road Safety Authority



MEDICINES AND DRIVING

Údarás Um Shábháilteacht Ar Bhóithre
Road Safety Authority



Guide to EU Rules ON DRIVERS' HOURS

REGULATION (EC) NO. 561/2006

Údarás Um Shábháilteacht Ar Bhóithre
Road Safety Authority



Guide to Tachographs in Minibuses

REGULATION (EC) NO. 561/2006

Údarás Um Shábháilteacht Ar Bhóithre
Road Safety Authority



Helping learner drivers to drive safely

Údarás Um Shábháilteacht Ar Bhóithre
Road Safety Authority

Road Safety Strategy 2007 – 2012




- **Action Number 10** : *Develop a template for employers on employee road safety education which can be rolled out nationally*



Introduction - Driving for work CD-Rom

▶ Introduction	▶ Why Manage DFW?	▶ Evaluating Road Safety Risks	 
▶ Definitions	▶ How to Manage DFW?	▶ Benefits for the Community	
▶ Road Safety Law	▶ Assessing Risk on the Road	▶ Further Information	
			▶ Contact Us
			▶ Model Forms
			▶ References

Introduction

Sound Off 

- Introduction
- About RSA
- About HSA

This CD-ROM outlines what you as an employer, manager or supervisor can do to improve the road safety of employees who drive as part of their work. The CD-ROM aims to reduce the number of road collisions, deaths and serious injuries in Ireland by making you and your employees aware of the importance of road safety when driving for work.

The CD-ROM is for:

- employers, managers or supervisors whose employees drive as part of their work;
- self-employed people whose main job is driving or who drive occasionally for their work;
- new or established bus or truck operators.

Road Safety Authority statistics show that, between 1997 and 2007, 266 people were killed and 443 were seriously injured in collisions involving at least one vehicle in which someone was travelling to or from work and driving for work. Studies also show that people who drive company cars have between 30% and 40% more collisions than ordinary drivers, and this risk increases for those who drive more than 40,000 km a year. A 2008 Health and Safety Authority (HSA) research survey found that, among employers, there was a lack of awareness of their duties to manage work-related driving activities.

Health and safety law requires you to put the proper measures in place to protect the safety of all your employees. This CD-ROM will outline the ways you can manage your employees road safety, as well as giving you an overview of key definitions, legislation and risk areas. It will also highlight the significant benefits for your business and the wider community when you manage work-related vehicle safety more effectively.



Driving for Work Seminars

Learn how to protect your employees who drive for work *and* save money.

The Road Safety Authority (RSA) and the Health and Safety Authority (HSA) are running a series of nationwide seminars in June to highlight the importance of safe driving for work. The seminars will be of interest to all organisations whose employees drive on the road as part of their work, whether in a company provided vehicle or their own vehicle.

Seminar Content

Attendees will be provided with information, guidelines and tools to address the issues that impact on their safety management and operational decisions in relation to any employees who drive for work. As well as highlighting the legal, safety and business cases for action, the seminars will provide information on:

- Developing a risk management approach to driving for work
- Potential cost savings
- Training and supervision of drivers and line managers
- Developing company policies and standards
- Common links and causes of incidents

Content will be delivered in a practical and easy to understand format and no specialised knowledge or expertise is required.

Why Attend?

The seminars will focus on the importance of implementing the 'Driving for Work' guidelines in the workplace, the tools by which to do this and the associated cost savings. The seminars will feature speakers from the RSA and HSA, as well as a speaker from the ESB who will provide delegates with an insight into how they have incorporated the guidelines into their work and the cost savings made as a result. In addition, a member of An Garda Síochána will also speak at the seminars to give an overview of the multi-agency approach to driving for work.

Driving for work poses risks not only for the driver, but also for fellow workers and members of the public, such as pedestrians and other road users. Employers must, by law, manage the risks that employees face and create when they drive for work. These seminars will assist employers in identifying the risks associated with driving for work and provide assistance in developing an effective driving for work management plan.

Who Should Attend?

The seminars are primarily aimed at Small to Medium Enterprises but are also designed for any organisation in the private or public sector with employees who drive as part of their job, whether in a company provided vehicle or their own vehicle. In small companies, the best person to attend may be the Managing Director or General Manager. In larger companies it may be a manager with a more specialised role. Examples of the type of audience the seminars are aimed at include:

- Managing Director
- General Manager
- Logistics/Transport/ Depot Manager
- Sales Manager
- Health & Safety Manager

List of Seminars

Wednesday 9th June	Kilkenny	Newpark Hotel
Thursday 10th June	Cork	Silver Springs Moran Hotel
Wednesday 16th June	Dublin	Davenport Hotel
Thursday 17th June	Sligo	Sligo Southern Hotel

Agenda

09:00am	Registration/Tea & Coffee
09:30am	Opening Address
09:40am	Driving for Work – The Basics Health and Safety Authority
10:05am	The Harm Landscape Road Safety Authority
10:30am	Managing Driving for Work Health and Safety Authority
10:55am	Tea/Coffee
11:15am	The Road Landscape An Garda Síochána
11:40am	The Driver's Handbook – An Effective Tool to Help You Manage Road Safety Authority
12:05pm	Effective Management of Driving for Work – Case Study ESB
12:30pm	Q&A (Close of seminar at approximately 1:00pm)

Driving for Work Seminars

Learn how to protect your employees who drive for work *and* save money.



How To Book

To register for a seminar, simply email rsvp@drivingforwork.ie indicating which seminar you would like to attend along with your name (and the names of any other attendees), your organisation and telephone number.

Attendance is free of charge. Places are strictly limited so early booking is advised. Multiple bookings from the same organisation are permitted subject to availability. For any further details on the seminars, email rsvp@drivingforwork.ie or telephone 01 772 8912.

Put simply, attending these seminars could help to prevent a serious collision.





Thank you